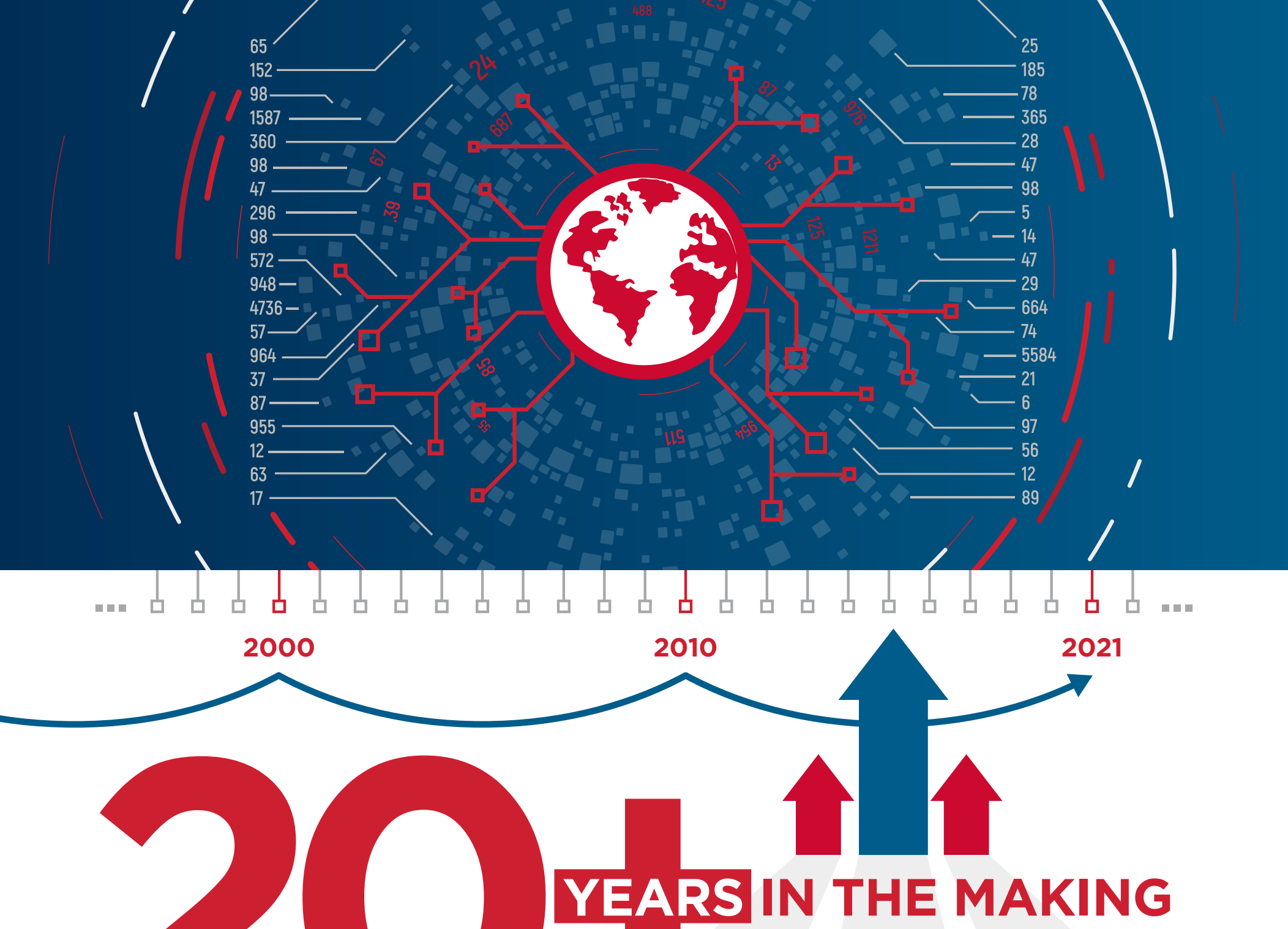


# Symantec Global Intelligence Network

Our GIN enables our tools and experts to identify and detect threats quickly and accurately, protecting customers from attack. It fuels our industry-leading technologies that provide more complete protection for your business. **What makes Symantec GIN so unique?**



**20+ YEARS IN THE MAKING**

Symantec has the biggest global footprint of threat intelligence. We've spent over two decades collecting more data about threats on the Internet and behind URLs than anyone else — categorizing websites, applying advanced analytics and machine learning, assigning risk scores and having our own threat experts review and interpret what we see.

**We can resolve 97%** of content and risk assessment questions from our database, without having to reach out to other sources. We recognize and rate malicious threats in over **50 languages**.

## Not Playing Cat & Mouse

**Symantec can identify a threat even before zero day.**

With sophisticated data analytics and leveraging our in-depth knowledge base, we will alert customers to a threat, detect and delete it, or prevent it from entering an organization altogether.

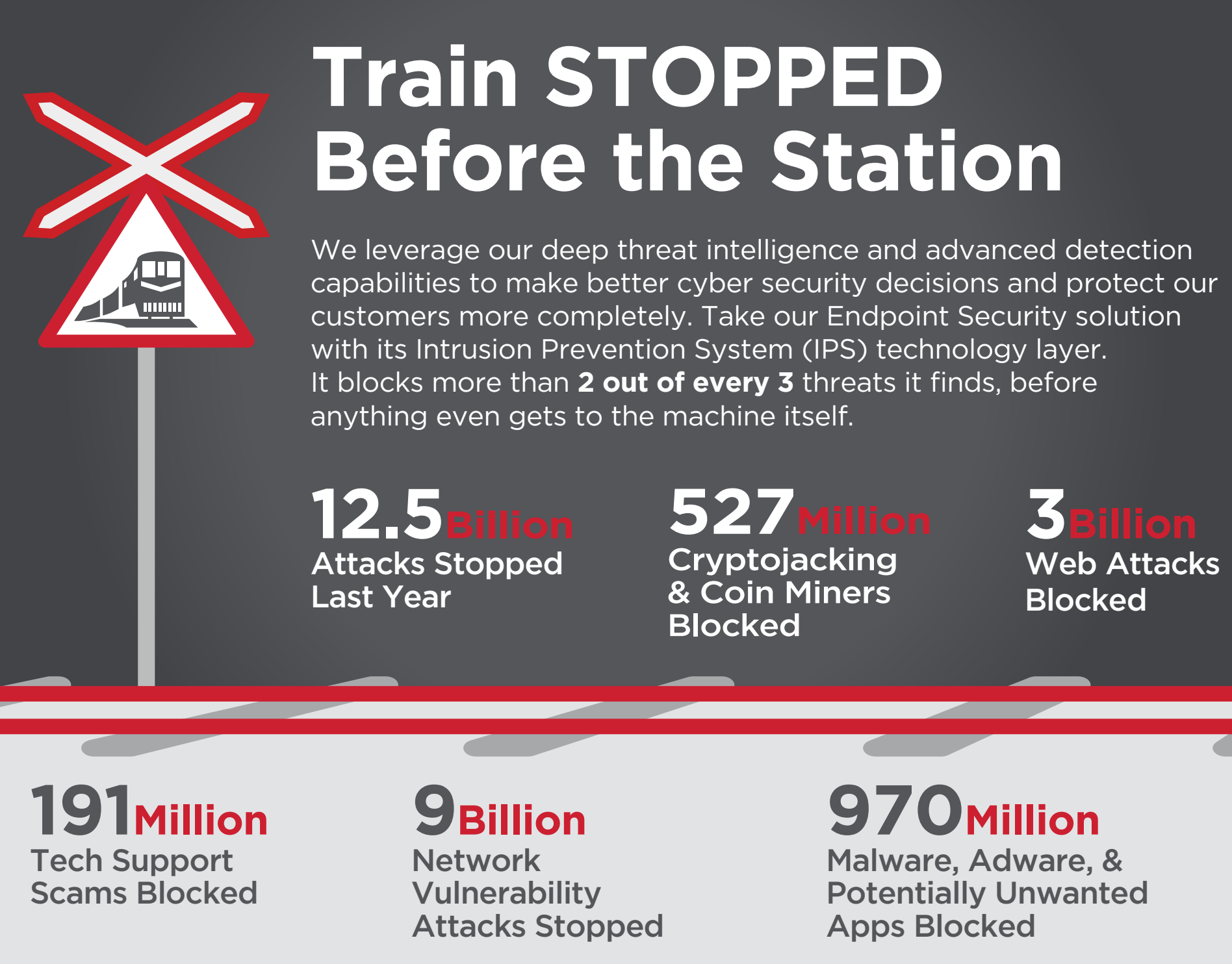


## Uniquely Identify One-Hit Wonders

Adversaries put sites up, do bad things, and then take them down on the same day—a **“one-hit wonder.”**

Is your vendor relying on 7-day data to assess threats? We're not.

We can identify that one-hit wonder before damage is done.



## More Than *Just* Collecting Threat Data

Not only do we aggregate telemetry from our global deployments, but we also leverage data from specific analysts, third-party threat feeds, and from our customers who share telemetry with us. We apply advanced analytics and machine learning for deeply rich insights—all stored in a cloud-based data lake for fast correlation.

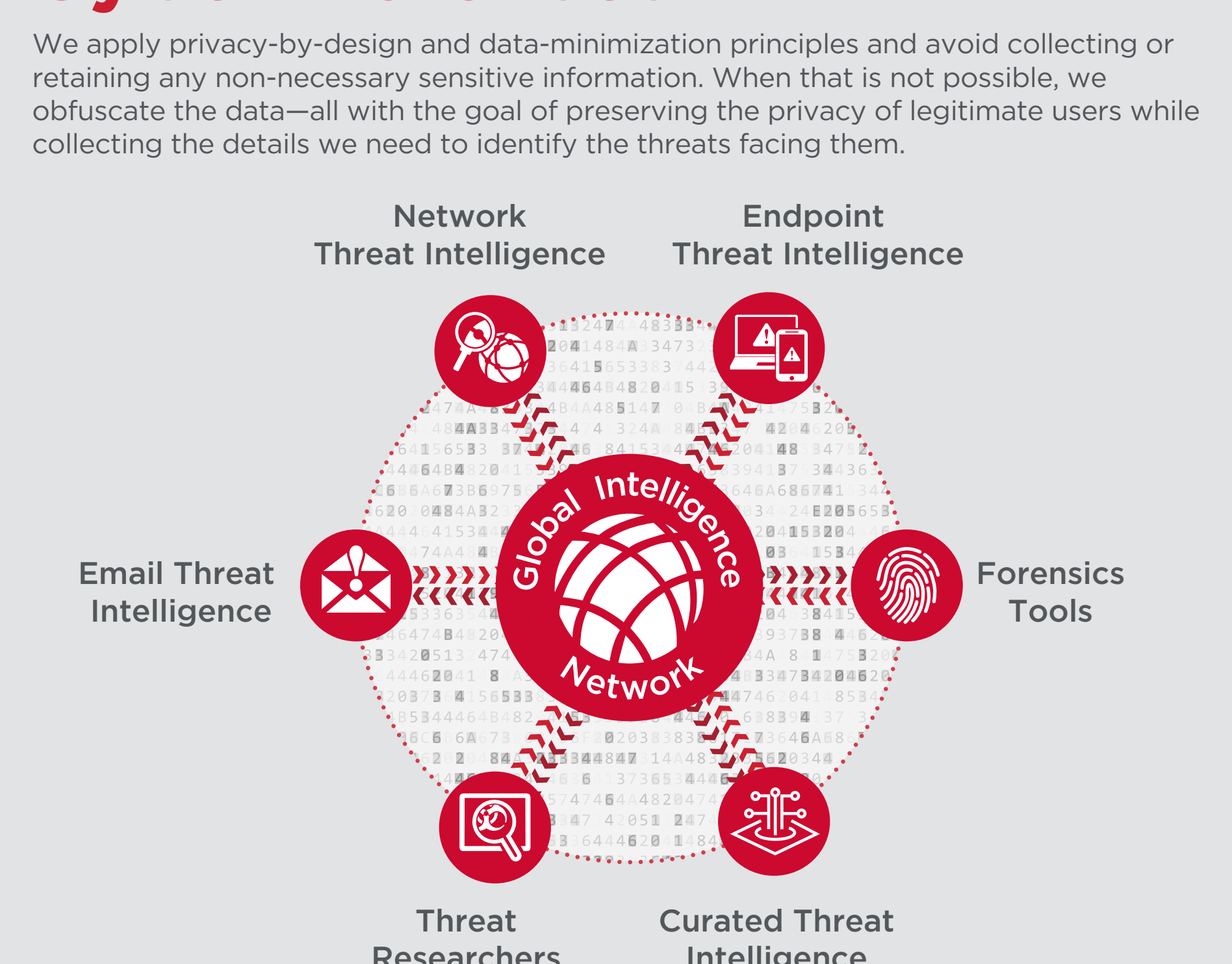


## Experts Applying Expertise

The insights in our GIN are strengthened by our cyber security analysts who are monitoring and investigating threats **24/7 globally**. They have decades of experience, industry expertise, and deep technical skills—all harnessed to bring you a view into the evolution of threats, tactics, and techniques happening across the globe.

## Compliant Telemetry Collection to Bolster Cyber Defenses

We apply privacy-by-design and data-minimization principles and avoid collecting or retaining any non-necessary sensitive information. When that is not possible, we obfuscate the data—all with the goal of preserving the privacy of legitimate users while collecting the details we need to identify the threats facing them.



## Your Turn to Use Our GIN Directly

**The best intelligence is real time.** As a Symantec customer, you can directly leverage the deep insights in the GIN through our Threat Intelligence API. It's integrated into many intelligence platforms already, or you can access it via the Symantec Endpoint Security console.

## Be Like 8 out of 10 Fortune 500 Companies

Big companies across the globe trust Symantec—and the quality of our threat intelligence is a big reason. Our customers see the network effect of Symantec analyzing threat data in the aggregate and in real-time. By turning on telemetry sharing, you contribute to **the largest global cyber security community in the world**—and more importantly, we can customize cyber security for your organization's unique requirements.



To learn more about the Symantec Global Intelligence Network, go to: <https://www.broadcom.com/info/symantec/global-intelligence-network>



For more product information: [broadcom.com](https://www.broadcom.com)  
Copyright © 2020 Broadcom. All Rights Reserved. Broadcom, the pulse logo, Connecting everything, and Symantec are among the trademarks of Broadcom. The term "Broadcom" refers to Broadcom Inc. and/or its subsidiaries. April 28, 2021